

temperature measurement

resistance thermometer WTR 395

features

- resistance thermometer for temperature measurement in pipelines and case
- temperature decoupled measuring point/protective fitting
- adaptable with sleeve socket and process connection (see accessories)
- connection head made of V4A
- protective fitting fixed with connection head
- temperature resistance PT100 directly constructed in protective fitting
- electrical connection on board (clamps) or programmable measuring transducer
- specials on request

technical specifications

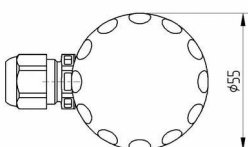
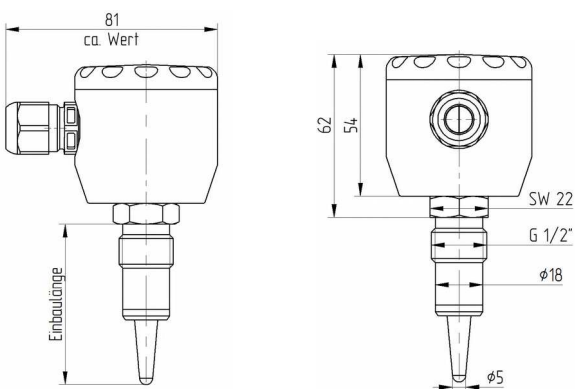
- protective fitting made of stainless steel 1.4404 respectively PEEK
- process connection thread G 1/2" A
- temperature ranges: -50 °C to +200 °C (extended ranges on request)
- short reaction time
- less influences by environmental temperature
- tightening torque max. 10-15 Nm

product benefits

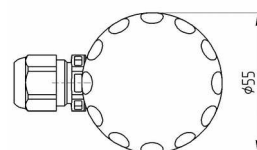
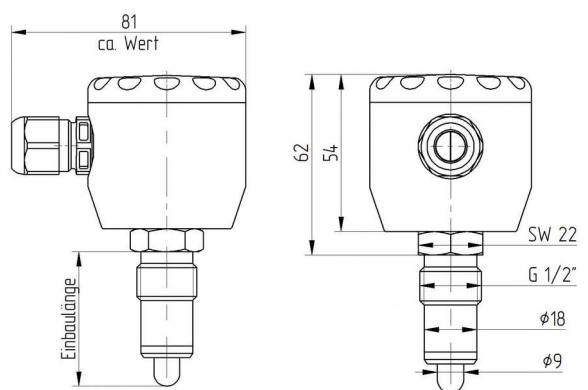
The WTR 395 impresses with its food grade as well as conical or spherical measuring tip, which is aseptically adapted with the help of the welding sleeve (ZEM 150 or KEM 150). The additional PEEK ring (temperature decoupling) on the measuring tip counteracts falsifying temperature influences of container walls or container environments. Thanks to its design, the sensor is ideally suited for applications in tanks or containers with agitators or similar.

technical drawing

WTR 395...XS



WTR 395...XR



WTR 395...XR



WTR 395...XS

temperature measurement

order-code WTR 395...

order example: WTR 395-16-XS-2A-2KMU (0-100 °C)

connection heads

-5	stainless steel head standard with screw cap, with screwing, protection class IP69K
-6	stainless steel head standard with screw cap, with M12-plug, protection class IP69K
-15	stainless steel head extended design with screw cap, with screwing, protection class IP69K
-16	stainless steel head extended design, with M12-plug, protection class IP69K

mounting type

-XR	spherical measuring point, thermal decoupled
-XS	tapered measuring point, thermal decoupled

type of sensor and tolerance

-1A	1xPT100 class A
-2A	2xPT100 class A
-1C	1xPT100 1/3 DIN
-2C	2xPT100 1/3 DIN
-KX	type of sensor and tolerance on customer's request

optional

-KMU	with programmable measuring transducer (temperature range on request on preadjustment please specify)
-2KMU	with 2 programmable measuring transducer (head with extended design necessary, please specify the temperature range)

accessories

welding sleeves

-99-000191	KEM 150, welding sleeve, bullet, for G1/2" sealing system, diameter 35m, hygienic process adaption
-99-000193	ZEM 150, welding sleeve, cylinder, for G1/2" sealing system, diameter 30mm, hygienic process adaptation

M12-connection wires

-101090	connection cable M12 angled, 4-pole, 5m PVC cable, grey
-101087	connection cable M12 straight, 4-pole, 5m PVC cable, grey

Other lengths available on request.

For more accessories, see accessories data sheet.